

**MATRIX®**

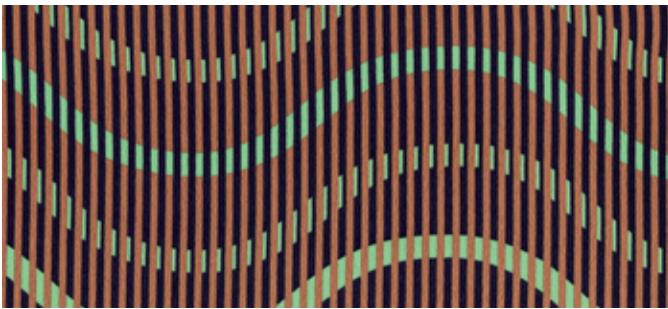
Winterkollektion 2017/18

# LOTTE



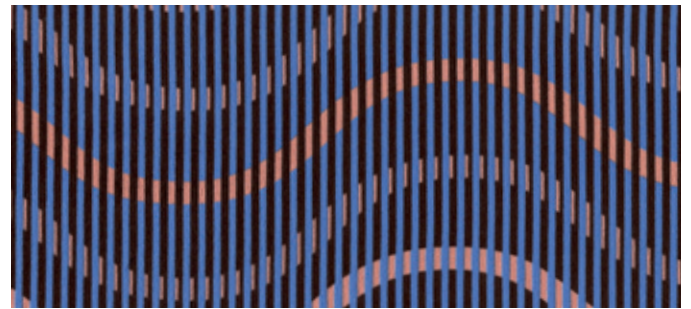
Design: Matrix Basel  
Masse: 40 × 151 cm  
Material: 100% Seidencrêpe de Chine  
Produktion: Siebdruck  
Spezialität: handrouliert  
Umfang: 6 Kolorits  
Pflege: Handwäsche

01



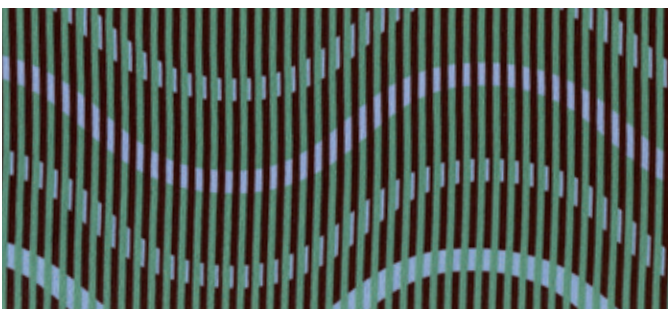
marine, caramel, neongrün

02



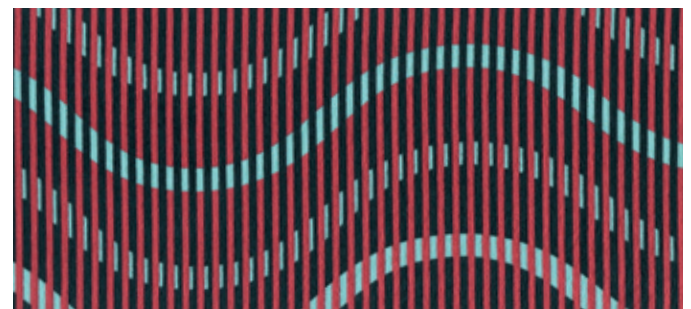
schokolade, kornblume, crevette

03



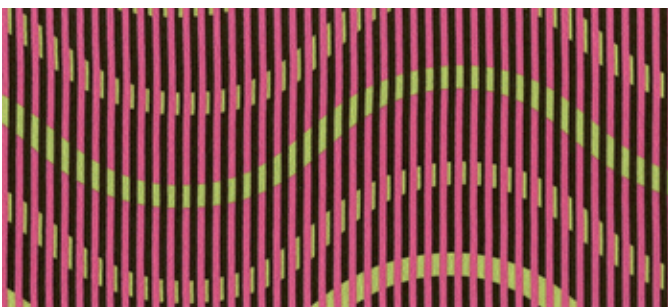
mahagoni, flaschengrün, himmel

04



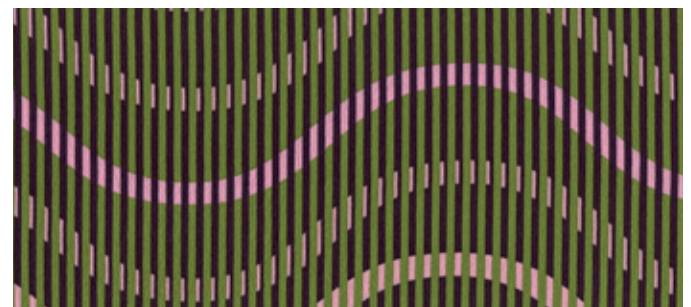
marsgrün, beere, jade

05



umbria, fuchsia, limone

06



aubergine, maigrün, rosa