

MATRIX®

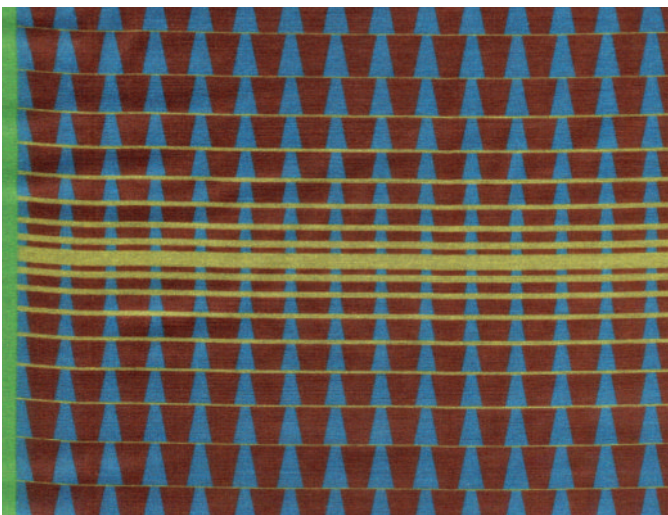
Winterkollektion 2016/17

FRANCIS



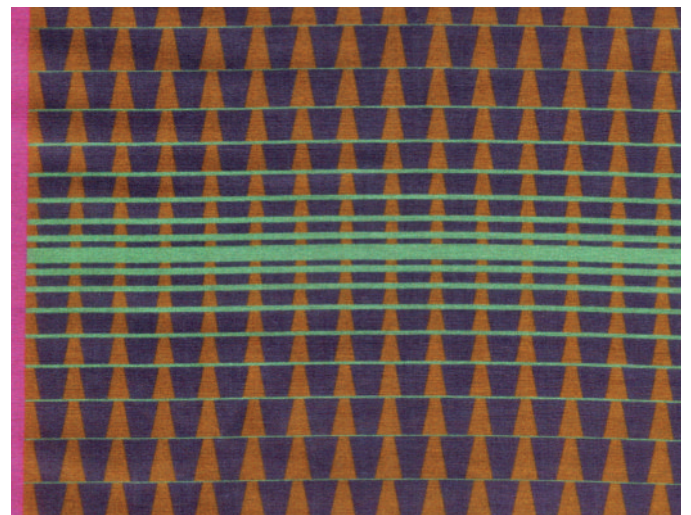
Design: Matrix Basel
Masse: 128x194 cm
Material: Siede / Baumwolle
Produktion: Digitaldruck
Spezialität: handrouliert
Umfang: 4 Kolorits
Pflege: 40°C Schongang

01



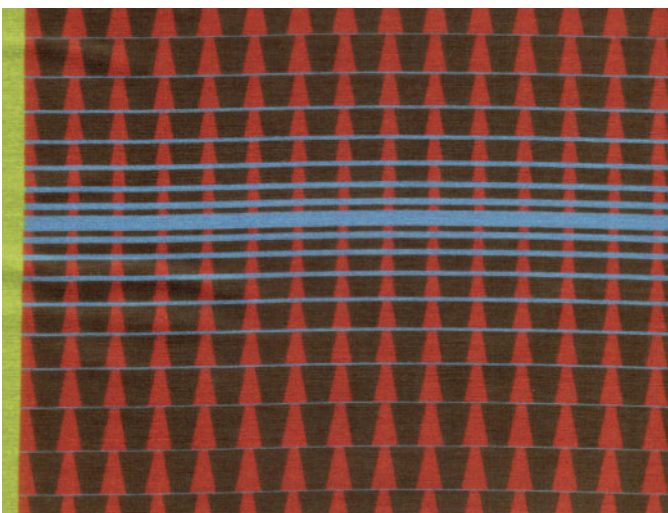
blau, schokolade, schwefelgelb, Rand: grün

02



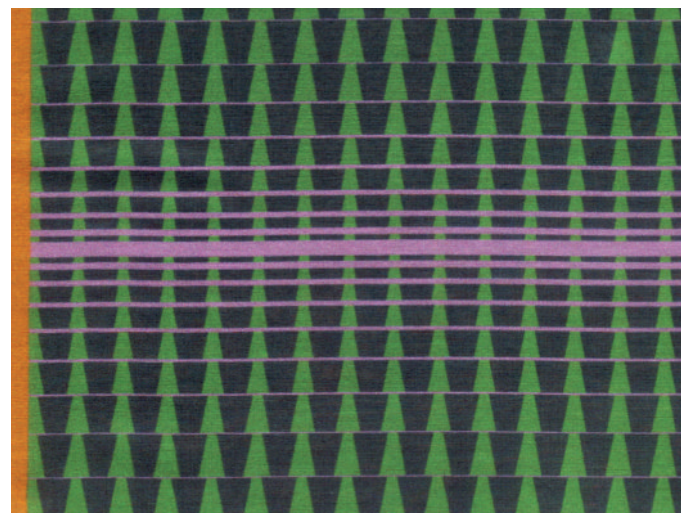
caramel, marine, wassergrün, Rand: pink

03



ziegel, dunkelolive, kalkblau, Rand: limette

04



broccoli, blautanne, rosa, Rand: orange