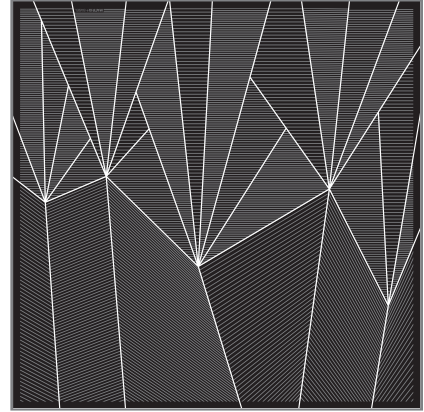


MATRIX®

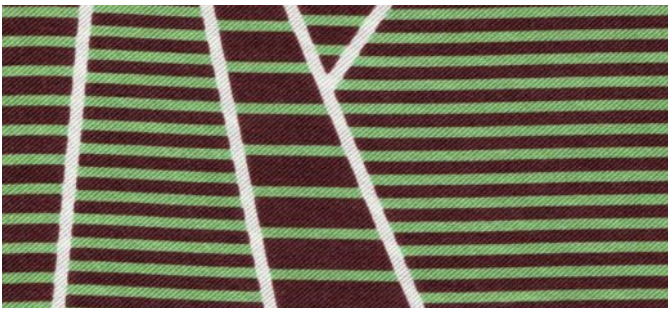
Winterkollektion 2015/16

OBSIDIAN

Design: Matrix Basel
Masse: 88x88 cm
Material: 100% Seidentwill
Produktion: Siebdruck
Spezialität: handrouliert
Umfang: 6 Kolorits
Pflege: Handwäsche

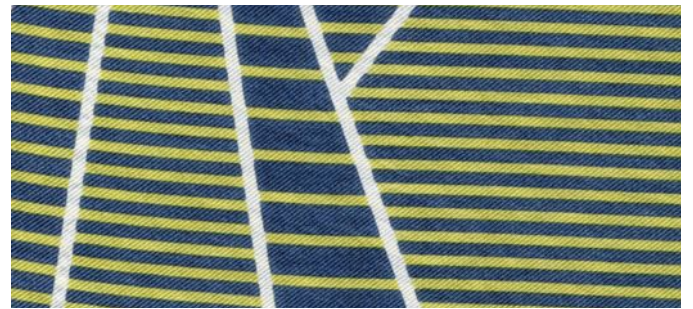


01



maron, basilikum

02



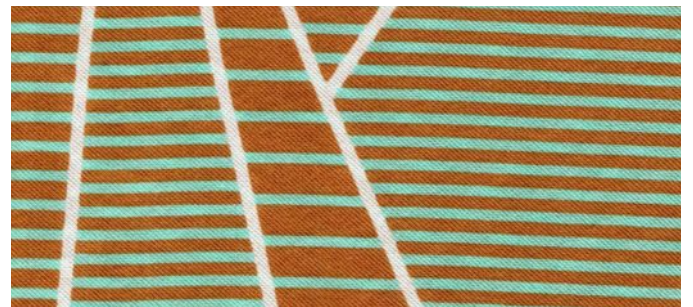
petrol, schwefel

03



mitternacht, leder

04



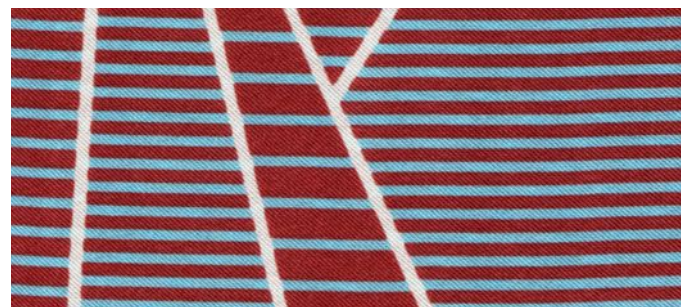
caramel, mint

05



khaki, blassrot

06



amarant, himmel