

MATRIX®

Winterkollektion 2014/2015

APETLON

Design: Matrix Basel

Masse: 156 × 62 cm

Material: 100% Wollmousseline

Produktion: Schweizer Fabrikat

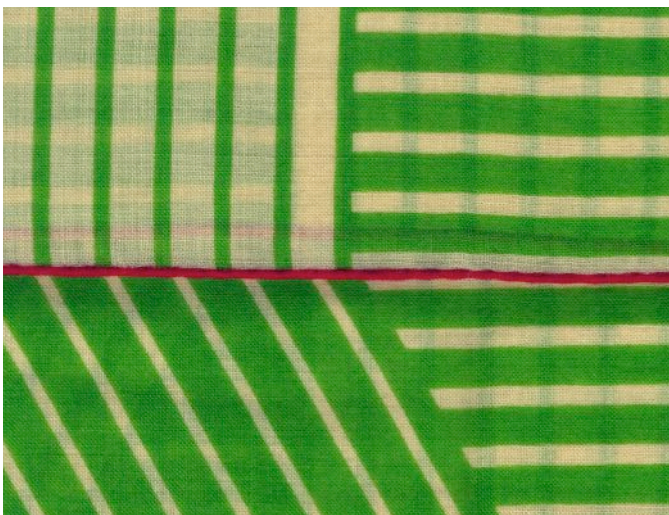
Spezialität: handrouliert

Umfang: 8 Kolorits

Pflege: Handwäsche

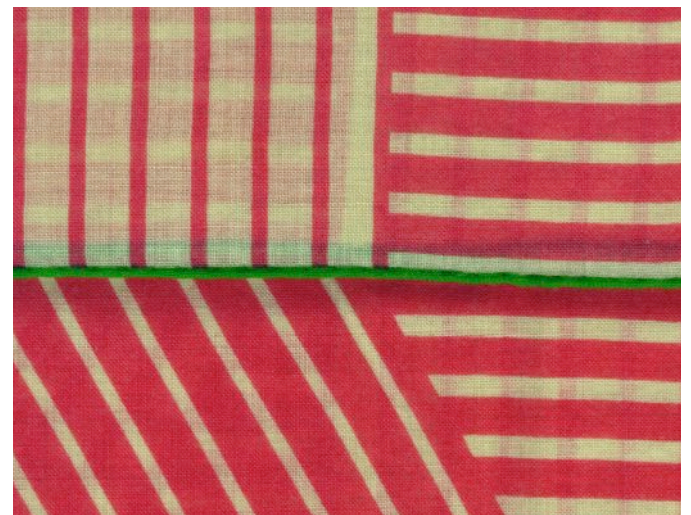


01



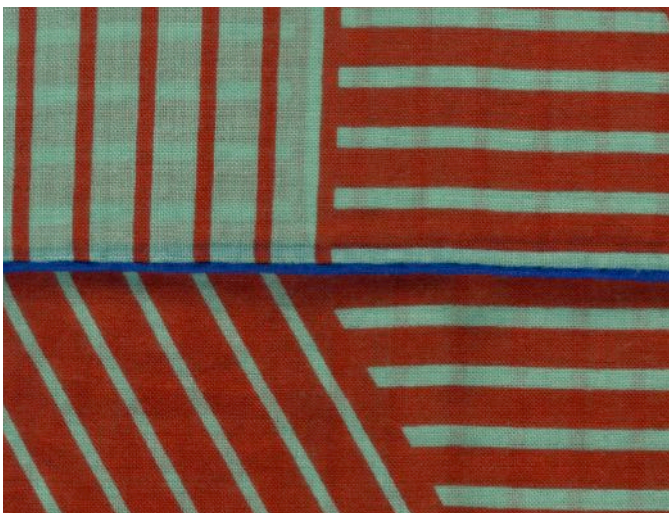
grün, wollweiss, Rollsaum zinober

02



karmin, wollweiss, Rollsaum grün

03



kürbis, mint, Rollsaum indigo

04



graublau, mint, Rollsaum ocker

MATRIX®

Winterkollektion 2014/2015

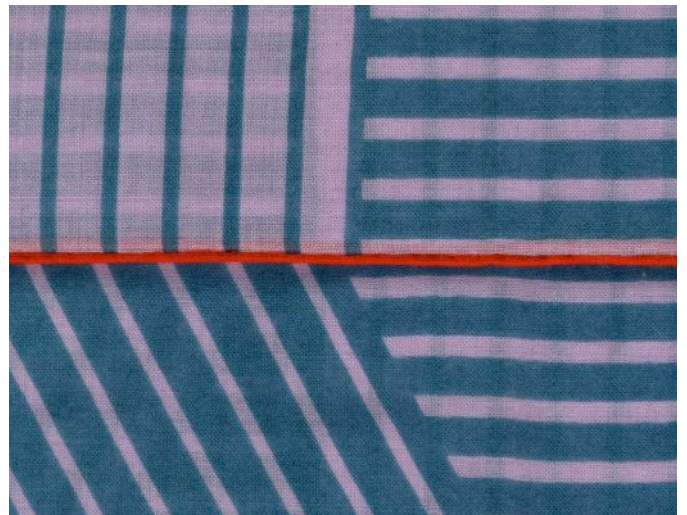
APETLON

05



ocker, flieder, Rollsaum azur

06



lagune, flieder, Rollsaum signal

07



klinker, hellblau, Rollsaum tannegrün

08



olive, hellblau, Rollsaum hibiscus