

MATRIX®

Winterkollektion 2014/2015

LEITHA

Design: Matrix Basel

Masse: 198 × 125 cm

Material: 50% Seide, 50% Baumwolle

Produktion: Schweizer Fabrikat

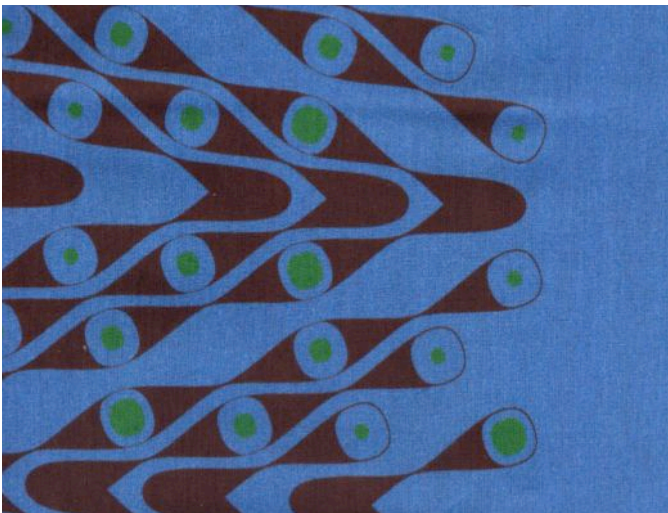
Spezialität: handrouliert

Umfang: 4 Kolorits

Pflege: Handwäsche

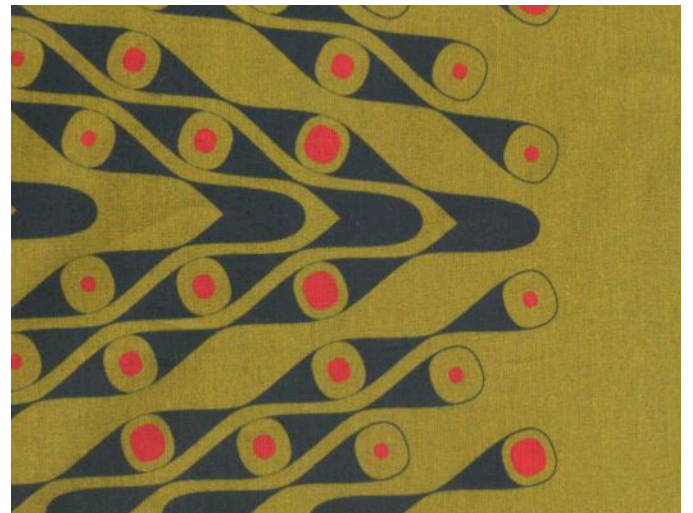


01



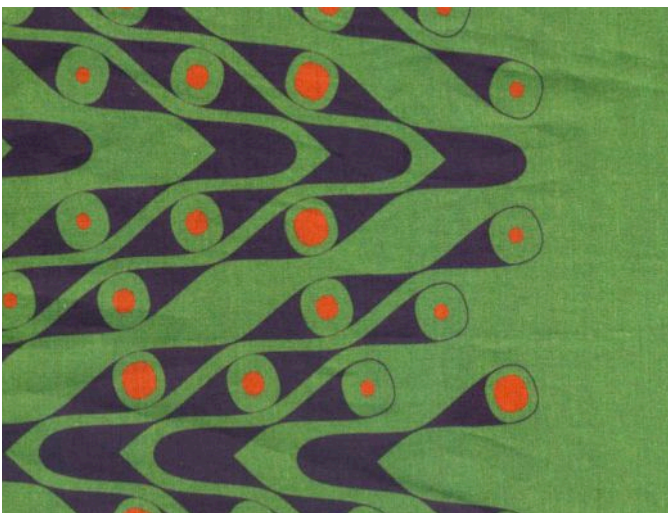
kornblume, maroni, flaschengrün

02



senf, marine, karmin

03



spinat, aubergine, orange

04



koralle, olive, lapislazuli