

MATRIX®

Winterkollektion 2014/2015

SOPRON

Design: Matrix Basel

Masse: 120 × 45 cm

Material: 100% Merino-Strick

Produktion: Schweizer Fabrikat

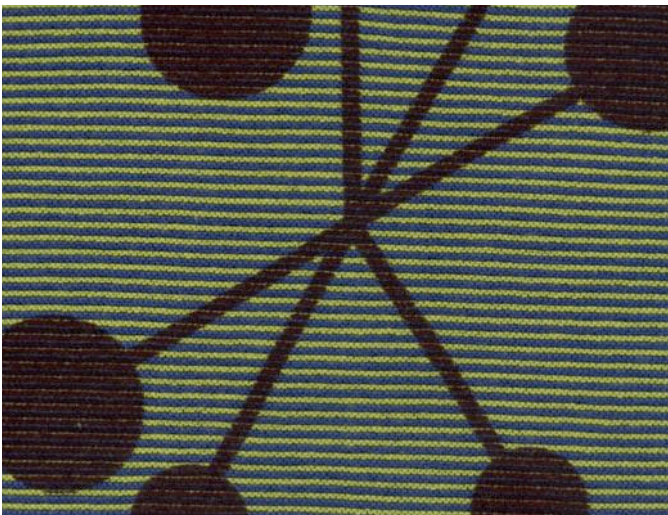
Spezialität: Schlauchschal

Umfang: 8 Kolorits

Pflege: Wollwaschprogramm

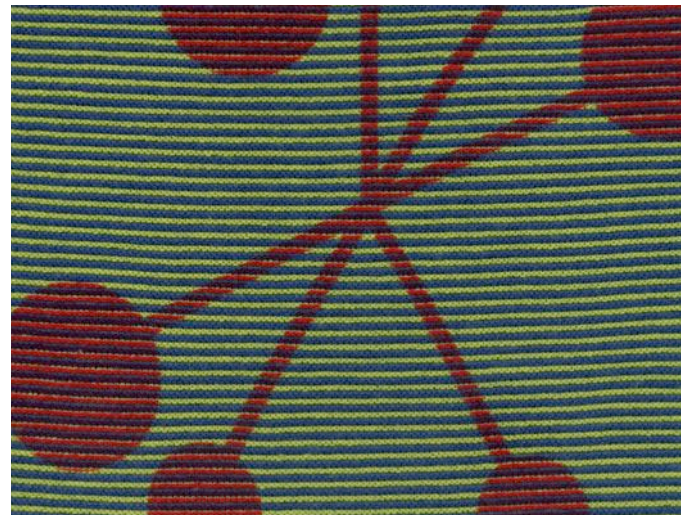


01



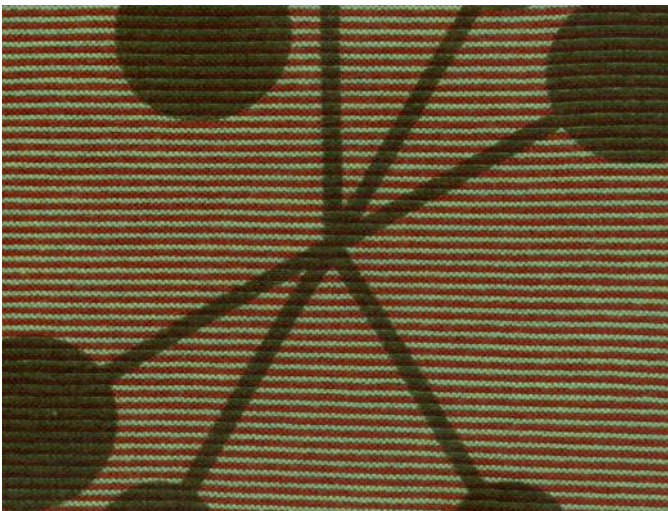
Strick mint-blau, Motiv aubergine

02



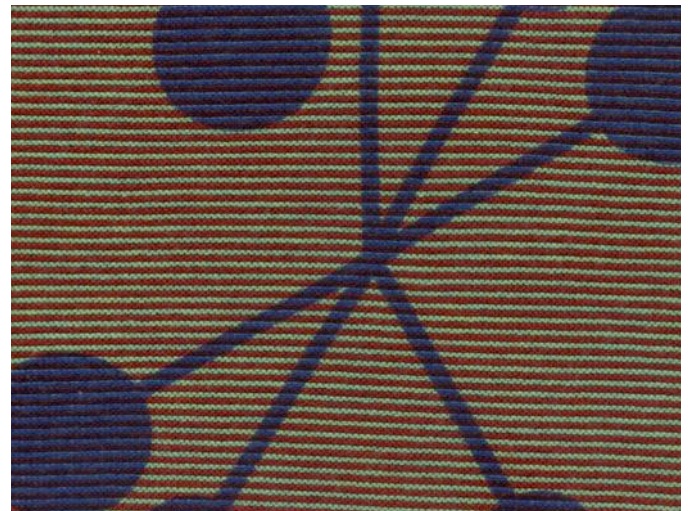
Strick mint-blau, Motiv beere

03



Strick pistache-hagebutte, Motiv moos

04



Strick pistache-hagebutte, Motiv indigo

MATRIX®

Winterkollektion 2014/2015

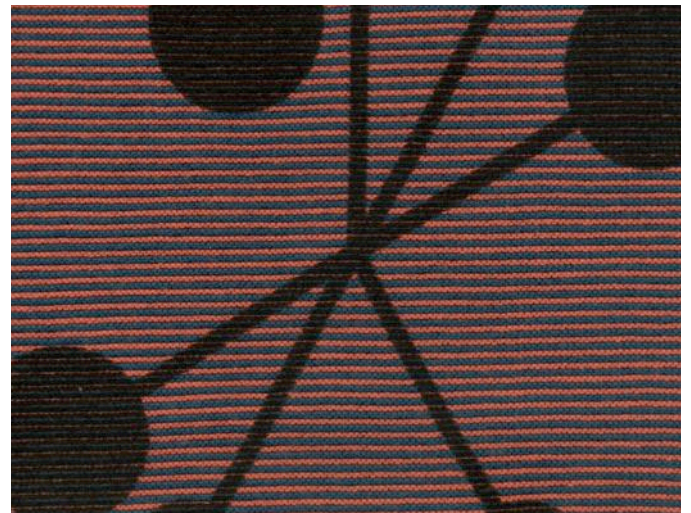
SOPRON

05



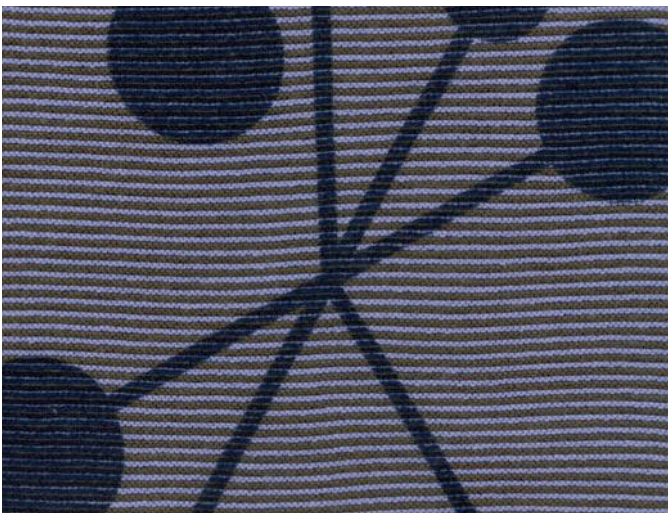
Strick crevette-blau, Motiv avocado

06



Strick crevette-blau, Motiv dunkelbraun

07



Strick lila-umbria, Motiv petrol

08



Strick lila-umbria, Motiv hagebutte